


**Features:**

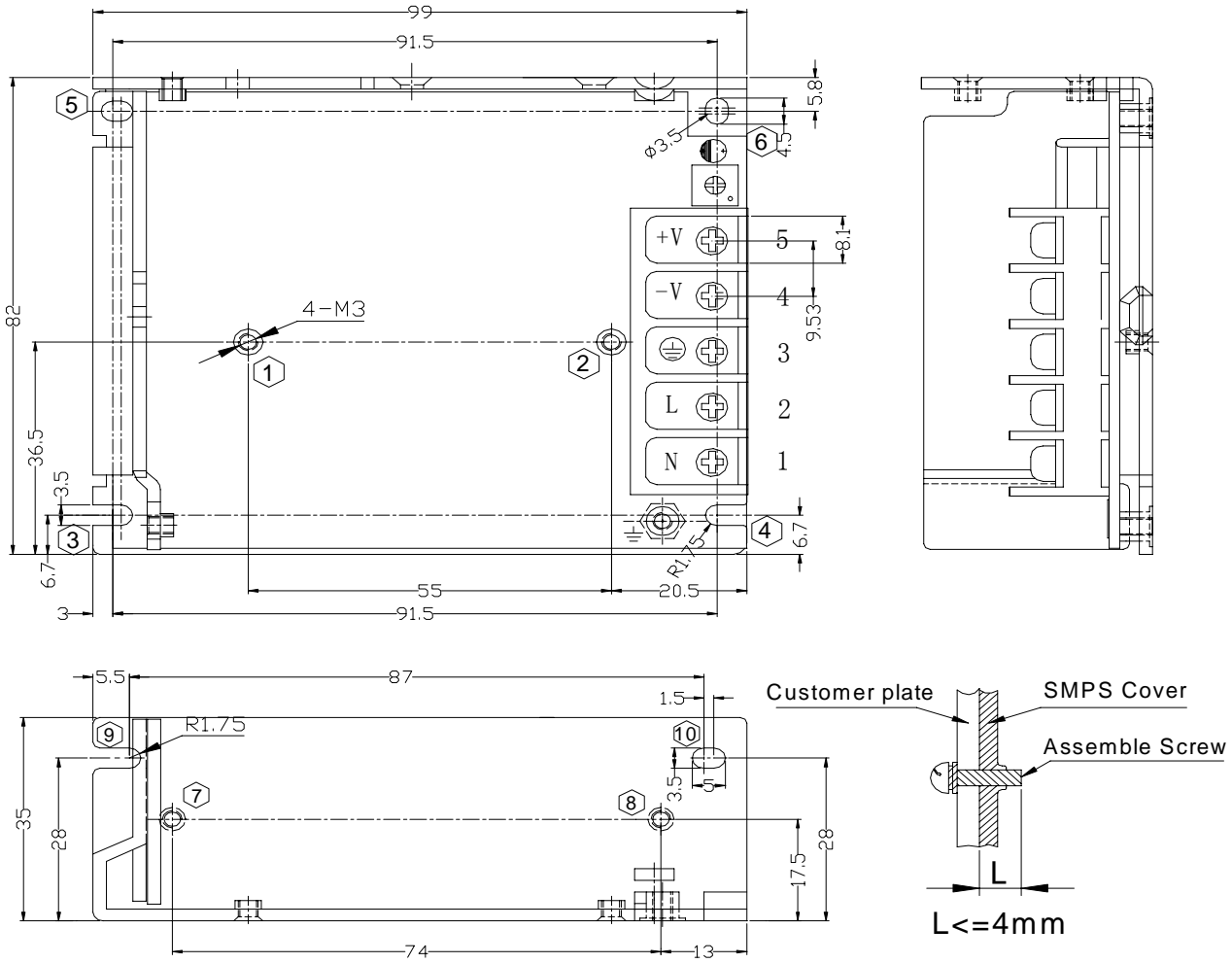
- No Load power consumption<0.5W
- Universal AC input range (88-264Vac)
- Miniature size, high power density, high efficiency, long life and high reliability
- Withstand 300VA surge input for 5 sec.
- Output protections: OLP/OVP/SCP
- Wide operating ambient temp (-25°C ~70°C)
- All using 105°C long life electrolytic capacitors.
- 100% full load burn-in test
- Easy assembling from top side
- PCB soldering side with conformal coating
- Suitable for critical applications
- 3 years warranty

**SPECIFICATION**

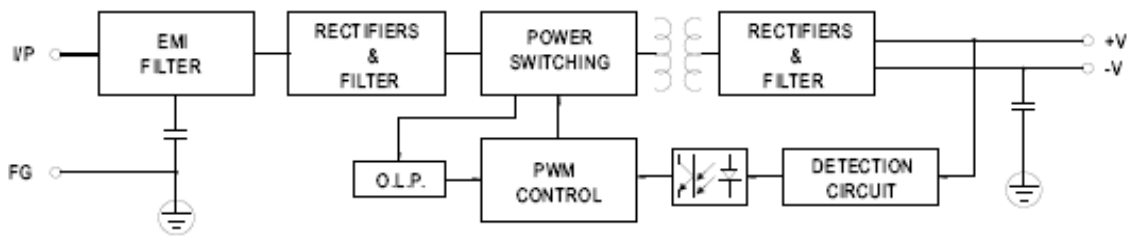
MODEL		PD-50-5	PD-50-12	PD-50-15	PD-50-24	PD-50-48	
OUTPUT	DC Output	5V	12V	15V	24V	48V	
	Rated Current	8A	4.2A	3.4A	2.2A	1.12A	
	Current Range	0~8A	0~4.2A	0~3.4A	0~2.2A	0~1.12A	
	Ripple and Noise	0~70°C	<80mV	<120mV	<120mV	<200mV	<200 mV
		-25~0°C	<80mV	<200mV	<200mV	<300mV	<500mV
	Voltage ADJ. Range	4.75~5.5V	11.4~13.2V	14.25~15V	22.8~26.4V	45.6~52.8V	
	Voltage Accuracy	±3.0%					
	Line Regulation	±0.5%					
	Load Regulation	±1.0%					
	Set-up Time	<1.5S (230Vac input, Full load)					
	Hold up Time	>50mS(230Vac input, Full load)					
Temperature Coefficient	±0.03%/°C						
Overshoot and Undershoot	<5.0%						
INPUT	Voltage Range	88Vac~264Vac, 127~370Vdc					
	Frequency Range	47Hz~63Hz					
	Efficiency (Typical)	115Vacinput	79%	82.5%	83.5%	85%	86.5%
		230Vacinput	80%	84.5%	85.5%	87%	88.5%
	AC Current (max.)	<1.3A					
	Inrush Current (Typical)	<45A@230Vac Cold start					
Leakage Current	Input—output:<0.25mA Input—PG:<3.5mA (input 264Vac, 63Hz)						
PROTECTION	Over Load	8.4~12A	4.41~6.3A	3.57~5.1A	2.31~3.3A	1.155~1.65A	
	Over Voltage	5.75~7.5V	13.8~18V	17.25~22.5V	27.6~36V	55.2~72V	
		Protection type: constant voltage, auto recovery					
Short Circuit	Long-term mode, auto recovery						
ENVIRONMENT	Operating amb. Temp. & Hum.	-25°C~70°C; 20%~90%RH No condensing (refer to the derating curve)					
	Storage Temp. & Hum.	-40°C~85°C; 10%~95%RH No condensing					
SAFETY & EMC Note 3	Safety Standards	UL60950-1 2 <sup>nd</sup> Ed; IEC 60950-1:2005(2 <sup>nd</sup> Ed); EN60950-1:2006					
	Withstand Voltage	Primary-Secondary: 3.0KVac/10mA .Primary-PG:1.5KVac/10mA. Secondary-PG: 0.5KVDC/10mA.					
	Isolation Resistance	100M ohms					
	EMC Emission	Compliance to EN55022 Class B / FCC Part15 Class B					
	EMC Immunity	Compliance to EN61000-4-2,3,4,5,6,8,11; heavy industry level					
OTHERS	MTBF (MIL-HDBK-217F)	More than 200,000Hrs (25°C, Full load)					
	Dimension (L*W*H)	99×82×35mm					
	Packing	40PCS/CTN, 12.8KGS, 0.043CBM					
	Cooling method	Cooling by free air convection					
NOTE	1. All parameters NOT specially mentioned are measured at rated input, rated load and 25°C of ambient temperature. 2. Measured at 20MHz of bandwidth by using a 12" twisted pair-wire terminated with a 0.1 uF & 10uF parallel capacitor. 3. The power supply is considered as a component which will be installed into a final equipment. The final equipment must be re-confirmed that it still meets EMC directives. For guidance on how to perform these EMC tests, please refer to "EMI testing of component power supplies" on <a href="http://www.powerld.com.cn">http://www.powerld.com.cn</a> .						

**Mechanical Specification**

Unit: mm



**Block Diagram**



**Derating Curve**

