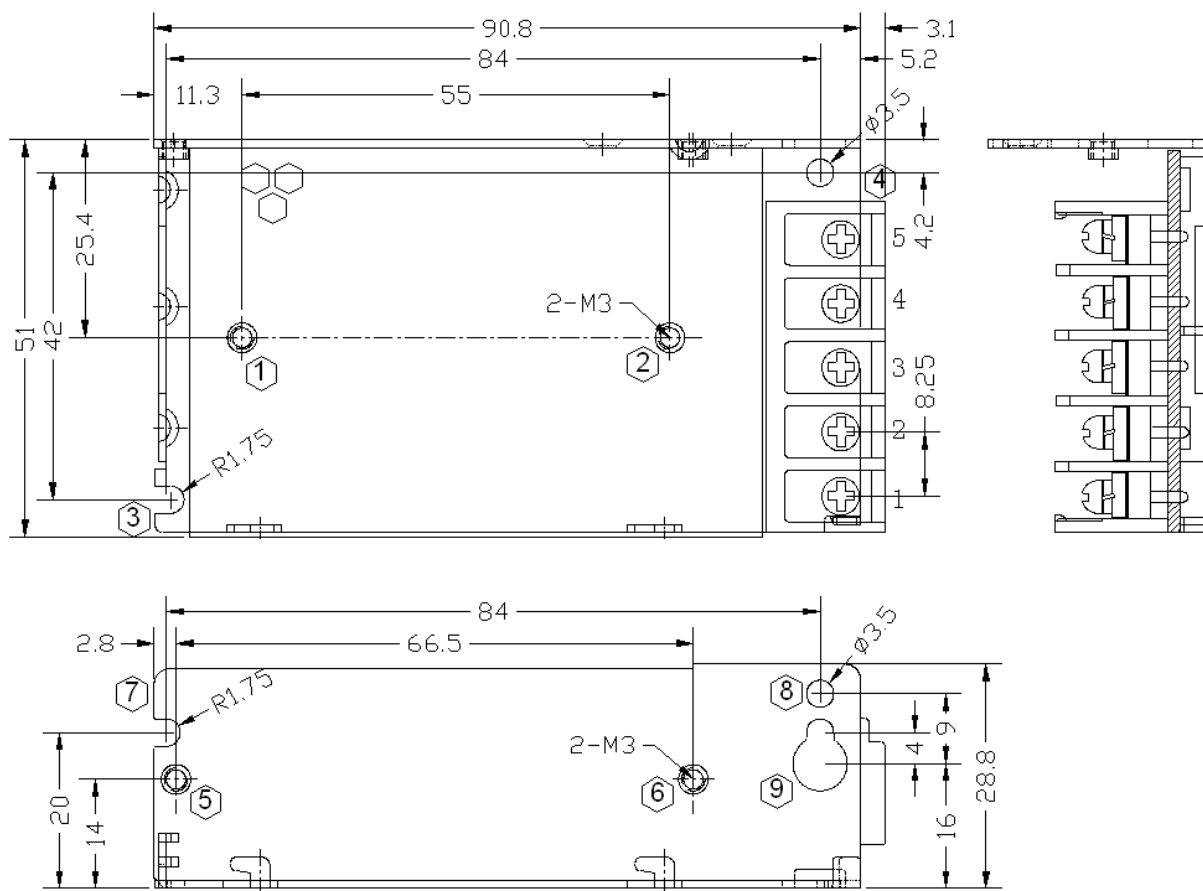

■ Features:

- No Load power consumption<1W
- Universal AC input range (88~264Vac)
- Miniature size, high power density, high efficiency, long life and high reliability
- Output protections: OLP/SCP/OPP/OVP
- Wide operating ambient temp (-20℃~70℃)
- All using 105℃ long life electrolytic capacitors.
- 100% full load burn-in test
- Suitable for critical applications
- 3 years warranty

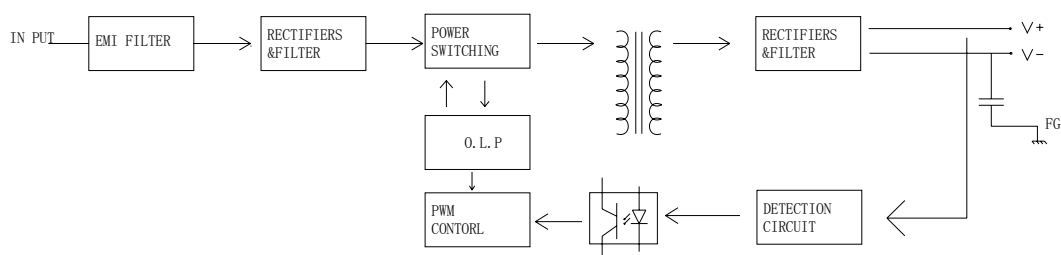
SPECIFICATION

MODEL			PD-25-12-Z
OUTPUT	DC Output		12V
	Rated Current		2.1A
	Current Range		0~2.1A
	Ripple and Noise Note 2	-20~70℃	<120mV
	Voltage ADJ. Range		11.4~12.6V
	Voltage Accuracy		±2.0%
	Line Regulation		±1.0%
	Load Regulation		±2.0%
	Set-up Time		<2.0S (115Vac input, Full load); <1.0S (230Vac input, Full load)
	Hold up Time		> 10mS(115Vac input, Full load); > 20mS(230Vac input, Full load)
	Temperature Coefficient		±0.03%/℃
	Overshoot and Undershoot		<5.0%
	INPUT	Voltage Range	
Frequency Range		47Hz~63Hz	
Efficiency (Typical)		82%	
AC Current (max.)		0.7A	
Inrush Current (Typical)		<20A@115Vac <40A@230Vac Cold start	
Leakage Current		Input—output:<0.25mA Input—PG:<0.75mA	
PROTECTION	Over Load		2.2~3.15A, constant power, auto recovery
	Over Power		26.5~37.8W, Constant power, auto recovery
	Over Voltage		12.6~18V, Constant voltage, auto recovery
	Short Circuit		Long-term mode, auto recovery
ENVIRONMENT	Operating amb. Temp. & Hum.		-20℃~70℃; 20%~90%RH No condensing (refer to the derating curve)
	Storage Temp. & Hum.		-40℃~85℃; 10%~95%RH No condensing
SAFETY & EMC Note 3	Safety Standards		EN60950-1
	Withstand Voltage		Primary-Secondary:3.0KVac; ≤10mA .Primary-PG:1.5KVac; ≤10mA. Secondary-PG:0.5KVDC;≤10mA.
	Isolation Resistance		≥100M ohms
	EMC Emission		Compliance to EN55022, EN55024, FCC PART 15 CLASS B
	EMC Immunity		Compliance to EN61000-4-2,3,4,5,6,8,11; heavy industry level
OTHERS	MTBF (MIL-HDBK-217F)		More than 200,000Hrs (25℃, Full load)
	Dimension (L*W*H)		94*51*29mm
	Packing		48PCS/CTN, 10.4KGS, 0.03CBM
	Cooling method		Cooling by free air convection
NOTE	1. All parameters NOT specially mentioned are measured at 230Vac input, rated load and 25℃ of ambient temperature. 2. Measured at 20MHz of bandwidth by using a 12" twisted pair-wire terminated with a 0.1 uF & 10uF parallel capacitor. 3. The SPS is considered a component which will be installed into final equipment. The equipment must be re-confirmed that it still meets EMC directives.		

Mechanical Specification Unit:mm



Block Diagram



Derating Curve

Derating Curve

